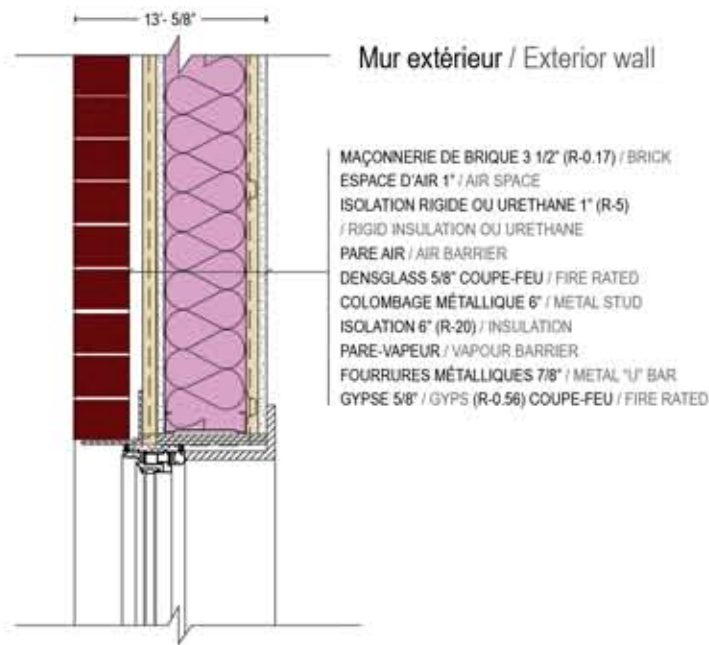
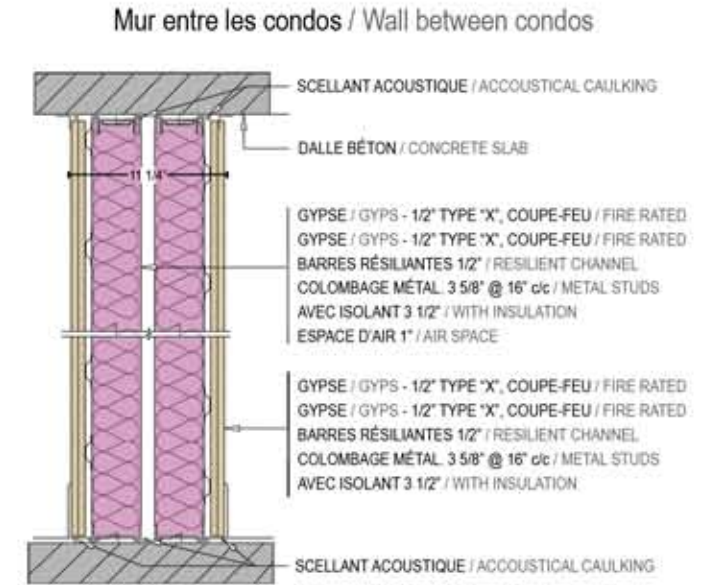
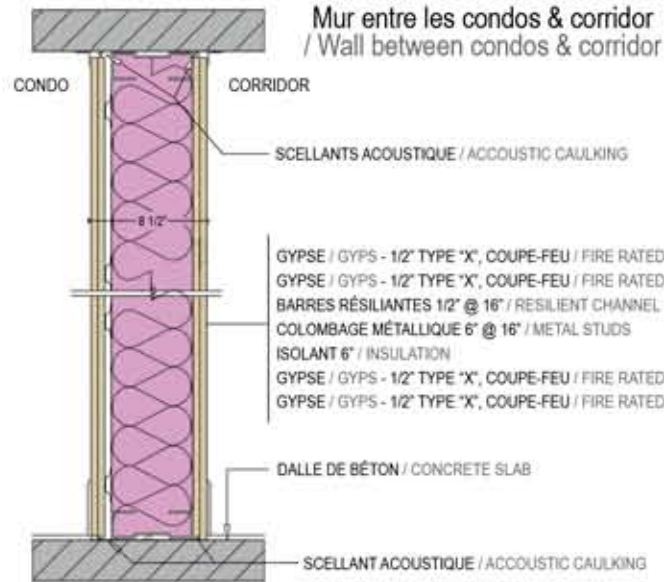


DÉTAILS DE LA CONSTRUCTION
/ CONSTRUCTION DETAILS

Murs des ascenseurs : béton de 10" + isolant + gypse /
Elevator walls : 10" concrete + insulation + gyps

Les illustrations peuvent changer sans préavis selon les détails
de construction des architectes ou des ingénieurs. /
The illustrations are subject to changes without notice
according to construction details by the architect or the Engineer.



Plancher entre les condos / Floor, ceiling between condos

